

*American Security*



**Gun Safe Catalog  
2010**



**American Security Corporate Headquarters  
Fontana CA, USA**



Since 1948 American Security Products has protected the assets of our clients throughout the world by providing a broad array of safes and consulting services with the highest degree of quality, integrity and responsiveness. Customers have trusted AMSEC safes for generations. The design of each AMSEC safe draws on over 60 years of experience on protecting the physical assets of our customers. There aren't many criminals with over 60 years of experience, so we think that gives us the advantage.

Before the American Security name is attached, each safe must undergo a rigid 28-point inspection. In addition, every AMSEC safe undergoes the industry's most comprehensive testing program. AMSEC uses independent agencies such as Underwriter's Laboratories to put our designs to the test. We maintain the tightest tolerances and highest standards of fit and finish in the industry.

Our commitment doesn't end there. We have built our company on the commitment to offer the best service in the industry which will insure that AMSEC remains the industry leader.

Our corporate center is staffed with highly trained Customer Service Representatives and our Service Department is supported by 7,500 factory-trained technicians throughout the world. Technicians are available 24 hours a day, 365 days a year to answer questions and help solve problems with any safe shipped anywhere in the world. We have been providing safes and security solutions to the banking industry since 1948. This type of high security technology is built right into our gun safes.

We produce over 60,000 safes each year and we take protecting our customers' assets very seriously. That's how we got to be the largest security safe manufacturer in the world, and that's why you can't buy a better gun safe than an American Security safe.

Simply put, our reputation is built on product design, innovative technology and the best support in the industry.

It has worked for us for over 60 years and it ensures our complete customer satisfaction. The choice is easy:

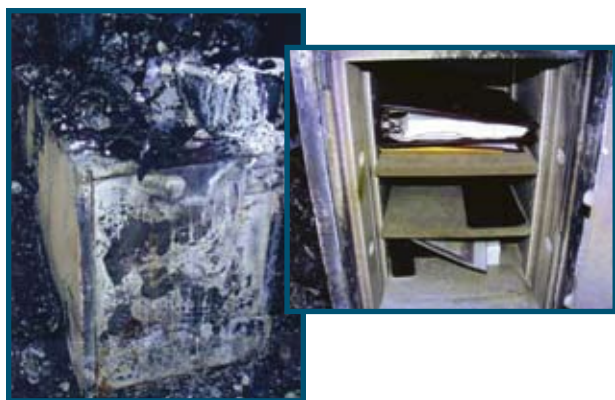
# American Security

## The Industry Leader for Over 60 Years



# We Stand Behind Our Craftsmanship with a “No Cost” Lifetime Warranty

American Security Products Co. is highly acclaimed for offering the industry's best fire protection. We manufacture the industry's broadest gamut of fire-rated products ranging from Underwriters Laboratories (U.L.) Listed 1 and 2 hour fire safes to our Mercury Class I, Class II, Class III, and Class IV fire protected gun safes.



**Actual American Security Safe  
after a fire.**

## Fire Protection Level Chart

Each AMSEC safe is designed to maintain an interior temperature of less than 350°F.  
Paper products will char at approximately 450°F.

Series	Fire Label	Outside Temp	Time Period	Inside Temp Less Than
<b>RF6528</b>	Mercury Level IV	1850°F	120 min.	350°F
<b>HS Series</b>	Mercury Level IV	1850°F	120 min.	350°F
<b>BF® Series</b>	Mercury Level III	1275°F	90 min.	350°F
<b>SF Series</b>	Mercury Level II	1200°F	60 min.	350°F
<b>TF Series</b>	Mercury Level I	1200°F	30 min.	350°F

AMSEC gun safes that proudly display the UL Residential Security Container (RSC) Burglary Classification demonstrated the ability to withstand rigorous prying, drilling, punching, hammering, chiseling and tampering attacks performed by today's most experienced UL expert technicians.



Most of our Gun Safes meet or exceed the standards for California approved Firearms Safety devices and the requirements of California Penal Code Section 12088, Gun Safe Standards. Look for our DOJ Approved Label.



All of our HS, BF, SF and TF Series safes come with a Palusol Intumescent Door Seal. When the intumescent seal is exposed to high temperature (above 250°F), it expands to as much as 8 times its original thickness. This provides a strong positive seal between the door and body, preventing heat influx.



## Gun Safe Lifetime Warranty

IF YOU ARE THE ORIGINAL OWNER OF AN AMSEC GUN SAFE THAT SUFFERS DAMAGE DUE TO THEFT OR FIRE, PROVIDE US WITH A PROPERLY FILED POLICE REPORT, WITHIN 30 DAYS. WITH ABSOLUTELY NO COST TO YOU, WHICH MEANS: FREE PARTS, FREE LABOR AND FREE FREIGHT; WE WILL EITHER REPAIR OR REPLACE (OUR OPTION) WITH A CURRENT PRODUCTION MODEL OF COMPARABLE VALUE. FOR ADDITIONAL ASSISTANCE, PLEASE CONTACT YOUR LOCAL DEALER. WE WILL BE STANDING BY READY TO TAKE IMMEDIATE ACTION TO GET YOUR VALUABLES QUICKLY SECURED BACK IN A QUALITY BUILT AMSEC SAFE.

### **NO COST - BREAK-IN WARRANTY**

IF YOUR AMSEC GUN SAFE IS FORCIBLY ENTERED, WE WILL REPLACE OR REPAIR IT, FREE OF CHARGE.

### **NO COST - ATTEMPTED BREAK-IN WARRANTY**

IF YOUR AMSEC GUN SAFE HAS BEEN SUBJECT TO A DRILL, PUNCH OR PRY ATTACK AND HAS PERFORMED SUCCESSFULLY BY KEEPING THE INTRUDERS OUT, IT WILL BE REPAIRED OR REPLACED FREE OF CHARGE.

### **NO COST - FIRE WARRANTY**

IF YOUR AMSEC GUN SAFE HAS BEEN SUBJECT TO A HOME FIRE, IT WILL BE REPAIRED OR REPLACED FREE OF CHARGE.

AMERICAN SECURITY'S WARRANTY COMMITMENT TO YOU: WE WILL FIX THE SAFE IN YOUR HOME IF AT ALL POSSIBLE. WE WILL PAY FOR THE SAFE TECHNICIAN TO OPEN THE SAFE. WE WILL PAY FOR THE SAFE TECHNICIAN TO REPAIR THE SAFE AND IF A REPAIR IS NOT POSSIBLE WITHIN THE HOME, WE WILL PAY FOR THE FREIGHT BACK TO THE FACTORY. EFFECTIVE ON GUN SAFE PURCHASES STARTING 01/01/2006

## Contents

<b>HS Series</b> <i>High Security</i> .....	<b>4</b>
<b>BF® Series</b> <i>Burglary/Fire</i> .....	<b>6</b>
<b>SF Series</b> <i>Sixty Minute Fire</i> .....	<b>8</b>
<b>TF Series</b> <i>Thirty Minute Fire</i> .....	<b>10</b>
<b>CSC Executive</b> .....	<b>12</b>
<b>AM Series</b> .....	<b>12</b>
<b>Handgun Safes</b> .....	<b>13</b>
<b>Security Products</b> .....	<b>13</b>
<b>Vault Door</b> .....	<b>14</b>
<b>Electronic Locks &amp; Other Options</b> .....	<b>15</b>
<b>Stor-it Options</b> .....	<b>16-17</b>
<b>Features At A Glance</b> .....	<b>18</b>

Shown Below in  
Macadamia Metallic  
with Brass Hardware and  
Optional S&G Electronic Lock



#### The RF6528 Features:

The only U.L. Listed TL-30 burglary and fire resistant gun safe on the market.

2¾" thick door constructed of outer and inner steel plates enclosing a unique burglary-resistant high security material and an ARMOR steel plate barrier protecting the entire door.



#### The HS6743 and HS7943 Features:

U.L. Listed TL-15 burglary and fire resistant high security gun safe.

2¾" thick door constructed with 1" thick solid steel plate and an inner steel plate enclosing a unique burglary-resistant, high security material.



3½" thick body constructed with 1" thick solid steel plate inner wall and an outer steel plate enclosing a unique burglary-resistant, high security material.



#### All HS Series Safes Feature:

Mercury Class IV fire protection of 1850°F for 2 hours. Designed to maintain an interior temperature of less than 350°F.

U.L. listed Group 2M lock with spy-proof key-locking dial, drill shattering hard plate and two additional spring-loaded relocking devices.



Plush tan pin-dot fabric interior.

5-point handle in brass or chrome and bold zinc die-cast polished brass or chrome logos. (RF6528 can also be ordered with NEW Black Nickel hardware).

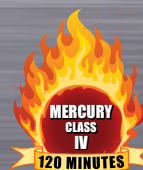


10 massive 1½" solid steel chrome plated locking bolts.



# HS Series - High Security

The Ultimate in Security and Fire Protection





# HS Series - High Security



Shown in Onyx with Brass Hardware, Optional Pull Handle and Optional Electronic Lock

**RF6528**

**Exterior**

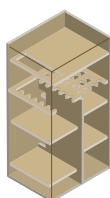
72" x 35" x 29½"

**Gun Capacity**

12-18-30

**Weight**

3,455 lbs.



Shown in Macadamia Metallic with Brass Hardware and Optional Electronic Lock

**HS7943**

**Exterior**

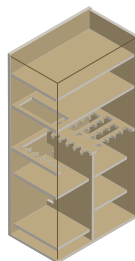
79" x 43" x 29½"

**Gun Capacity**

12-23-35

**Weight**

6,840 lbs.



Shown in Macadamia Metallic with Brass Hardware

**HS6743**

**Exterior**

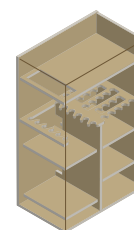
67" x 43" x 29½"

**Gun Capacity**

12-23-35

**Weight**

4,824 lbs.



## Hardware Options



Chrome



Brass



Black Nickel (RF6528 Only)

## Color Options

High Gloss



Platinum Metallic



Burgundy Metallic



Onyx



Pearl



Hunter Green Metallic



Macadamia Metallic



Charcoal Metallic

Textured



Sandstone



Granite



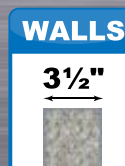
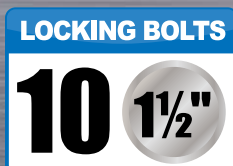
Black



Chocolate Brown

NEW!

All-in-One Interiors Come with 2 coverplates and 4 side shelves to allow storage on all sides of the safe. Models BF7250 and BF7240 come with 3 coverplates and 6 side shelves.



RF6528

HS7943 & HS6943

Shown Below in  
Charcoal Metallic with  
Black Nickel Hardware and  
Optional ESL10XL Electronic Lock



1/2" Steel Plate Door



2" Wall Thickness



1 1/2" Locking Bolts  
NEW 3-Way Bolt System



Adjustable Hinges



Group II Lock



5-Spoke Handle Standard



E-Z Slant-Out Interior

### The BF Series Features:

1/2" steel plate door combined with 1" **DryLight** insulation. (BF7250 is 3/8" steel plate.)

2" total wall thickness on all sides featuring our poured **DryLight** insulation and two layers of steel for exceptional fire and security protection.

U.L. Residential Security Container (RSC) Burglary Classification.

11 massive 1 1/2" chrome-plated bolts. Bolt detent system holds bolts in open position.

Mercury Class III fire protection of 1275°F for 90 minutes. Designed to maintain an interior temperature of less than 350°F.

Commercial grade, adjustable ball bearing hinges.

2 Stage Dual fire seals with silicone seal on door jamb and expandable Palusol™ seal on door.

U.L. Listed Group II Lock with massive hard plate and two relocking devices.

Spy-proof, key-locking dial with decorative five-spoke handle in brass, chrome or black nickel.

Unique mirrored back wall for added interior visibility.

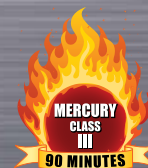
Bold zinc die-cast polished logos in brass, chrome or black nickel.

4 pre-cut anchor holes and 1 pre-cut electrical access hole.

E-Z Slant-Out Interior for easy access to your long guns. Interior features rich pin-dot fabric and adjustable interior shelving.

# BF® Series - Burglary / Fire

The Most Unique Gun Safe In the Industry





# BF<sup>®</sup> Series - Burglary / Fire

NEW BF7250 Three Hinge Design!



Shown in Textured Black with Chrome Hardware, ESLXL10 Electronic Lock and Optional Pull Handle

## BF7250

### Exterior

71¼" x 50" x 28"

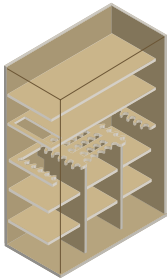
### Gun Capacity

12-23-24-35-47

w/PDO: 12-22-24-33-45+2

### Weight

1,682 lbs.



Shown in Burgundy Metallic with optional Stor-it "PDO," Cabinets and Light Kit

## BF7240

### Exterior

71¼" x 40" x 26"

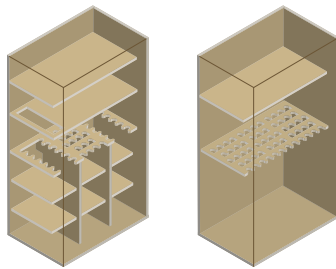
### Gun Capacity

12-18-24-30-42 / Optional 58 Gun

w/PDO: 12-14-24-26-38+2

### Weight

1,490 lbs.



Shown in Hunter Green with Brass Hardware

## BF6636

### Exterior

65¼" x 36" x 26"

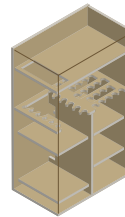
### Gun Capacity

12-23-35

w/PDO: 12-19-31+2

### Weight

1,246 lbs.



Shown in Pearl White with Optional "AR" Rack and Light Kit

## BF6030

### Exterior

59¼" x 30" x 26"

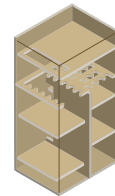
### Gun Capacity

12-18-30

w/PDO: 11-14-25+2

### Weight

976 lbs.



## BF6032

### Exterior

59¼" x 30" x 21"

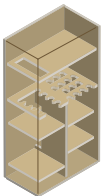
### Gun Capacity

8-14-22

w/PDO: 7-11-18+2

### Weight

862 lbs.



## Hardware Options



Chrome



Brass



Black Nickel



All-in-One Interiors Come with 2 coverplates and 4 side shelves to allow storage on all sides of the safe. Models BF7250 and BF7240 come with 3 coverplates and 6 side shelves.

## Color Options

High Gloss



Platinum Metallic



Burgundy Metallic



Onyx



Pearl



Hunter Green Metallic



Macadamia Metallic



Charcoal Metallic

Textured



Sandstone



Granite



Black



Chocolate Brown



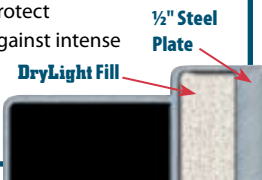
Two-Tone Black/Onyx



Two-Tone Granite/Charcoal

## All BF<sup>®</sup> Series Safes Feature DryLight Insulation

American Security Product's **DryLight** (trademark pending) is an advanced poured concrete insulation material that eliminates the use of gypsum board and provides a dry and seamless barrier to protect valuables against intense fires and burglary attacks.



## LOCKING BOLTS

11 1½"

## WALLS

2"

## ½" PLATE DOOR

4¾"

BF7250 is 3/8" Plate

Shown Below in  
Onyx with Chrome Hardware



### All SF Series Safes Feature:

1/4" Steel Plate door with 3 layers  
of fire insulating material.

Mercury Class II fire protection  
of 1200°F for 60 minutes.  
Designed to maintain an interior  
temperature of less than 350°F.

2 Stage Dual fire seals with  
silicone seal on door jamb and  
expandable Palusol™ seal on door.

Body constructed of 12-gauge  
solid steel plate with a fire  
insulating material.

U.L. Listed Group II Lock with  
massive hard plate and two  
relocking devices.

Optional electronic lock  
available.

3-point handle in brass, chrome  
or black nickel and bold zinc  
die-cast polished logos in brass,  
chrome or black nickel.

4-way boltwork with 5 active  
1 1/4" chrome-plated bolts and 3  
deadbolts.

Adjustable ball bearing hinges.

All-velour interior including  
back-cover and firewalls.

Four (4) pre-cut anchor holes  
with mounting hardware  
included and one (1) pre-cut  
electrical access hole.

Available in several gloss and  
textured finishes.



1/4" Steel Plate Door



Group II Lock



3-Spoke Handle



1 1/4" Locking Bolts



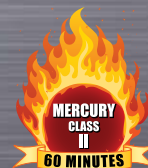
Adjustable Hinges



All Velour Interior

# SF Series - Sixty Minute Fire

Quality Packed, Affordably Priced





# SF Series - Sixty Minute Fire



Shown in Platinum Metallic with Chrome Hardware

## SF6036

### Exterior

59" x 36" x 26"

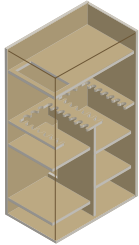
### Gun Capacity

17-17-34

w/PDO: 17-17-34 +2

### Weight

718 lbs.



Shown in Macadamia Metallic with Optional Stor-it "PDO," Cabinets and Light Kit

## SF6030

### Exterior

59" x 30" x 26"

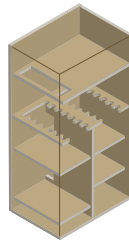
### Gun Capacity

14-14-28

w/PDO: 14-14-28 +2

### Weight

646 lbs.



Shown in Sandstone with Brass Hardware

## SF6032

### Exterior

59" x 30" x 21"

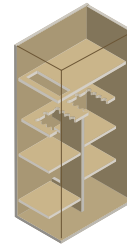
### Gun Capacity

9-9-18

w/PDO: 9-9-18 +2

### Weight

576 lbs.



Shown in Granite with Chrome Hardware and Optional Biometric Lock

## SF5924

### Exterior

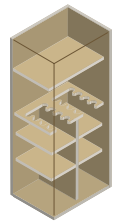
59" x 24" x 18"

### Gun Capacity

8-8-16

### Weight

462 lbs.



## Hardware Options



Chrome



Brass

NEW!



Black Nickel



All-in-One Interiors Come with 2 coverplates and 4 side shelves to allow storage on all sides of the safe.

## Color Options

High Gloss



Platinum Metallic



Burgundy Metallic



Onyx



Pearl



Hunter Green Metallic



Macadamia Metallic



Charcoal Metallic

Textured



Sandstone



Granite



Black



Chocolate Brown



Two-Tone Black/Onyx



Two-Tone Granite/Charcoal



## LOCKING BOLTS

8 1/4"

## WALLS

12 ga.

## 1/4" PLATE DOOR

4 1/4"



**3/16" Steel Plate Door**

**TF6036, TF6030, TF6032 and TF5924 Feature:**

3/16" Steel Plate door with 2 layers of fire insulating material.



**Group II Lock**

Mercury Class I fire protection of 1200°F for 30 minutes. Designed to maintain an interior temperature of less than 350°F.

2 Stage Dual fire seals with silicone seal on door jamb and expandable Palusol™ seal on door.



**3-Spoke Chrome Handle**

Body constructed of 12-gauge (5924 - 14ga) solid steel plate with a fire insulating material.

Group II, key-changeable lock with chrome spy-proof dial, internal relocker and drill resistant hardplate.



**1 1/4" Locking Bolts**

Optional electronic lock available.

3-point chrome tri-spoke handle and bold zinc die-cast polished chrome logo.



**Adjustable Hinges**

4-way boltwork with 5 active 1 1/4" chrome-plated bolts and 3 deadbolts.

Adjustable ball bearing hinges.



**Mocha Fabric Interior**

Textured Black exterior and Mocha fabric interior including back-cover and firewalls.

Four (4) pre-cut anchor holes with mounting hardware included and one (1) pre-cut electrical access hole.

# TF Series - Thirty Minute Fire

*An Unbeatable Value*



(TF5517 - 1 Year Parts & Labor Only)

**American Security Products**



# TF Series - Thirty Minute Fire

## TF6036

### Exterior

59" x 36" x 26"

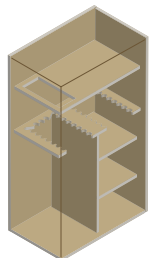
### Gun Capacity

19-19-38

w/PDO: 19-19-38 +2

### Weight

618 lbs.



## TF6030

### Exterior

59" x 30" x 26"

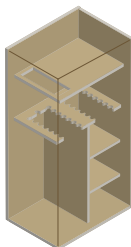
### Gun Capacity

15-15-30

w/PDO: 15-15-30 +2

### Weight

528 lbs.



## TF6032

### Exterior

59" x 30" x 21"

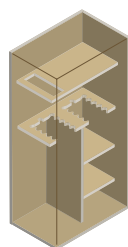
### Gun Capacity

11-11-22

w/PDO: 11-11-22 +2

### Weight

472 lbs.



## TF5924

### Exterior

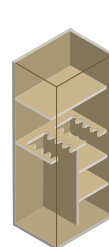
59" x 24" x 18"

### Gun Capacity

8-8-16

### Weight

388 lbs.



## TF5517

### Exterior

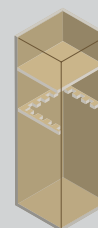
55 1/4" x 17 3/4" x 16"

### Gun Capacity

11-Gun

### Weight

286 lbs.



All Interiors Come with 1 coverplate to allow shelf storage on either side of the safe



**TF6036**

shown with Optional Stor-it PDO and clip-on light kit



**TF5517**

### The TF5517 Features:

3/16" Steel Plate door with 2 layers of fire insulating material.

Mercury Class I fire protection of 1200°F for 30 minutes. Designed to maintain an interior temperature of less than 350°F.

Palusol™ door seal - expands up to 8 times its original thickness when exposed to high temperatures.

Body constructed of 14-gauge solid steel plate with a fire insulating material.

3-wheel combination lock with spy-proof dial and drill resistant hardplate.

Chrome "L" handle and bold zinc die-cast polished chrome logo.

3-way boltwork with 5 active 1" chrome-plated bolts and 3 deadbolts.

Textured Black exterior and Mocha fabric interior including back-cover and firewalls.

Durable hinges.

Four (4) pre-cut anchor holes with mounting hardware included and one (1) pre-cut electrical access hole.

Warranty: 1 Year Parts and Labor Only.

TF6036, TF 6030  
TF6032, TF5924

### LOCKING BOLTS

**8 1 1/4"**

### WALLS

**12 ga.**

(TF5924 - 14ga)

### 3/16" PLATE DOOR

**3 5/8"**

TF5517

### LOCKING BOLTS

**8 1"**

### WALLS

**14 ga.**

### 3/16" PLATE DOOR

**3 1/4"**

# AM Series Home Safes



Optional Clip-On  
Light Kit Available

### AM Series Features:

- All-velour interior including back-cover and firewalls.
- Deep blue textured finish with bold, elegant American Security logo.
- Spy-proof dial and chrome "L" handle.
- Adjustable ball bearing hinges.
- High-strength unitized 12 ga. solid steel body.
- Massive 1 1/8" recessed door constructed of a 1/4" solid steel plate and a fire insulating material.
- 3-wheel combination lock protected by a drill-resistant hard plate. (U.L. Listed Group II Combination or Electronic lock available).
- 3-way boltwork with 5 active 1 1/4" diameter chrome-plated steel locking bolts (2020 Model has 4 active locking bolts).
- 4 pre-cut anchor holes with mounting hardware included.
- Fire protection of 1200°F for a period of 30 minutes. Designed to maintain an interior temperature of less than 350°F.
- Warranty: 1 Year Parts and Labor

Model	Exterior	Door	Body	Bolts	Shelves	Weight
AM2020	20h x 20w x 20d	1 1/8"	12 ga.	6	1	158 lbs.
AM3020	30h x 20w x 20d	1 1/8"	12 ga.	8	2	215 lbs.
AM4020	40h x 20w x 20d	1 1/8"	12 ga.	8	3	270 lbs.

# CSC4520 Executive



Shown with Optional Clip-On Light Kit  
and Optional S&G Electronic Lock

### CSC4520 Executive Features:

- 4-5/8" thick door constructed with a 2" defense barrier of outer and inner steel plates creating a burglary resistant structure enclosing a unique proprietary, fire resistant composite material.
- 2-7/8" thick body enclosing a unique, high-density fire and burglary resistant composite material.
- Mercury Class IV fire protection of 1850°F for 2 hours, designed to maintain an interior temperature of less than 350°F.
- Heat expandable Palusol door seal guards contents against severe fires.
- Seven 1 1/2" diameter solid steel locking bolts.
- U.L. Listed Group II combination lock with chrome-plated spy-proof dial and a tempered glass relock device. Optional electronic locks available.
- Heavy duty steel hinges.
- Attractively accented with a full width fascia, matching three point handle and logo.
- Durable and attractive charcoal gray textured finish.
- All-velour interior with 3 adjustable shelves, 1 fixed counter top and a 6 gun rack.
- Pre-punched electrical access hole equipped with a Gun Saver dehumidifier.
- Door mounted Stor-it Pack with multiple pouches for quick access to items
- One internal counter-sunk anchor hole and mounting hardware are provided to securely anchor safe.
- Removable casters provide easy delivery and installation.

Exterior Dimension	Interior Dimension	Weight
50.5h x 25.5w x 28.9d	45h x 20w x 21.2d	768

# Home Safes

### CSC4520 Executive

**LOCKING BOLTS**  
7 1 1/2"

**WALLS**  
2 1/8"

**COMPOSITE DOOR**  
4 5/8"



# Fire Safes



## Safe features:

U.L. Listed, 350°F, 1-Hr fire protection.

Units with DL4000 Electronic lock (ES) feature:

- Emergency key lock • Low battery indicator • Power override battery box
- Spy-proof feature to hide combo • Motion detector with alarm

Models ES914 and ES149 come with drawer shelf, anchor holes and anchor hardware.

Mechanical combination units (FS) come with standard mechanical combination lock plus key lock.

## Safe Specifications

Model	Inside Dimensions (HxWxD)	Outside Dimensions (HxWxD)	Weight
<b>ES712</b>	7 x 11 3/4 x 8 1/2	11 13/16 x 16 5/8 x 13 3/4	100
<b>ES914</b>	8 9/16 x 14 1/4 x 9 3/4	14 x 19 1/2 x 15 3/8	124
<b>ES149</b>	14 3/8 x 8 3/4 x 10	19 1/2 x 14 x 15 5/16	126
<b>FS914</b>	8 9/16 x 14 1/4 x 9 3/4	14 x 19 1/2 x 15 3/8	124
<b>FS149</b>	14 3/8 x 8 3/4 x 10	19 1/2 x 14 x 15 5/16	126

# Electronic Safes



## Safe features:

Small burglary resistant safes with state-of-the-art DL4000 digital electronic locking system.

The DL4000 Electronic Lock features:

- Emergency key lock • Low battery indicator • Power override battery box
- Spy-proof feature to hide combo • Motion detector with alarm

Can be bolted to the wall, floor or put inside a safe.

Dual live bolts made of heavy-gauge steel.

Carpeted base.

## Safe Specifications

Model	Inside Dimensions (HxWxD)	Outside Dimensions (HxWxD)	Weight
<b>ES813</b>	7 13/16 x 12 1/16 x 5	8 x 12 1/4 x 7 3/4	16
<b>ES916</b>	8 x 15 3/4 x 10 5/8	9 x 16 x 13 1/8	30
<b>ES1014</b>	9 1/2 x 13 1/2 x 7	9 3/4 x 13 3/4 x 9 3/4	27
<b>ES2014</b>	19 1/2 x 13 1/2 x 9 1/2	19 3/4 x 13 3/4 x 12 1/4	47

# Handgun Safes



## ES412 w/DL4000 Electronic Lock

Exterior Dimension	Weight
8h x 12w x 4d	19

One (1) auxiliary key-lock, low-battery indicator, bright blue LCD display, and power override battery box • Heavy 16 ga. solid steel construction • Strong, pry-resistant recessed 10 ga. door with internal hinges • Two tempered-steel live bolts • Fits in a drawer and only requires 5" clearance • Excellent for protecting valuables, handguns or laptop computers.



## PB2 w/5BE Lock

Exterior Dimension	Weight
8h x 12w x 4d	8

Deep blue textured finish with chrome hardware • Heavy-duty chrome handle • Strong, pry-resistant chrome locking bolt • Interior cushioned with foam lining to protect against scratches • Easy to change combination with programmable override code • 9 VDC battery provides over 5,000 openings with low-battery indicator • External auxiliary battery connection • Tamper-proof penalty lockout protects against manipulation attempts • Pre-punched holes enable the case to be installed directly to most surfaces.

Optional: Quick Release Anchor Plate Assembly allows easy transfers with lock tabs and thumb screws, no tools necessary to transfer case.



Optional Quick Release Anchor Plate Assembly

# Fire, Electronic and Handgun Safes

# Vault Door

VD8030 Black Textured  
with Chrome



## Turn your entire room into a security center

Instead of buying three different safes over a lifetime, AMSEC vault doors turn your room into a security center. It is designed for easy installation that retrofits a standard 80" x 30" opening. Make your vault room double as a storm shelter with our in-swing vault door. Offering the same features as our standard vault door, the in-swing vault door will insure opening from the inside even if debris has blocked the door.

### Standard Features of VD8030 & VD8030BF:

U.L. Listed Group II Lock with massive hard plate and two relocking devices.

Select from four textured finishes.

Commercial grade, Vault Door hinges.

New - Adjustable door frame slides together to fit a wall thickness of 4-3/4" to 9-3/4".

Safety Lock Release: allows you to safely exit the vault room from inside. It also allows you to close and lock the door from the inside when equipped with an electronic lock, turning your vault into a safe room.

### Special Features of the VD8030BF:

2" thick door offers a defense barrier constructed of a 1/2" steel plate door combined with 1-3/8" DryLight insulation that provides a barrier against extreme heat.

10 massive 1 1/2" chrome-plated locking bolts. (Note: no deadbolts required on In-Swing door)

Spy-proof key-locking dial with matching five-spoke handle, pull handle and bold zinc die-cast logo. Available in polished brass, chrome or black nickel finish.

2 Stage Dual fire seals with silicone seal on door jamb and expandable Palusol™ seal on door.

### Special Features of the VD8030:

2" thick door offers a defense barrier constructed of a 1/8" inner and outer steel plates filled with a fire insulation material that provides a barrier against extreme heat.

10 massive 1 1/2" chrome-plated locking bolts. (Note: no deadbolts required on In-Swing door)

Elegant scrollwork and pinstripes accompanied by the renowned American Security logo. Available in silver or gold.

Spy-proof key-locking dial with matching five-spoke handle. Available in polished brass, chrome or black nickel finish.

Palusol™ door seal expands up to 8 times its original thickness when exposed to extreme heat.

	Minimum opening required:	Door opening:	In-Swing Door opening:	Weight
Standard	79 1/2" H x 29 1/2" W	77 1/2" H x 26 1/2" W	77 1/2" H x 20-5/16" W	395 lbs.
BF®	79 1/2" H x 29 1/2" W	77 1/2" H x 26 1/4" W	77 1/2" H x 19-7/8" W	695 lbs.

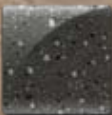


Safety Lock Release

### Color Options



Sandstone



Granite



Black



Chocolate  
Brown



Brass



Chrome



Black Nickel

### Hardware Options



NEW!

VD8030BF Chocolate Brown with Black Nickel

# Vault Door

Turns Any Room into a Security Center





# Electronic Lock Options

For quick and easy entry, an electronic lock is the choice to make. Locks are powered by batteries located in the dial and you can change your combination anytime.

## AMSEC®

**AMSEC's ESL10XL Models**

Available in Brass, Chrome and Black Nickel finish



**AMSEC's NEW Biometric Lock**

Available in Brass and Chrome



**S&G Model 6120**

Round Keypad, Brass or Chrome finish



**S&G Model 6120EZ**

"EZ" Keypad, Brass or Chrome finish



**LAGARD**

**LG Basic**  
Brass or Chrome finish

# Other Options



**GunSaver Dehumidifier**

Will constantly guard your guns against the threat of rust, pitting and moisture damage. Electrical access required.



**Clip-On Battery Operated Light Kit**

This compact light fits any safe, yet gives off a super-bright light, letting you see the contents of your safe easily. Battery Operated.

**Jewelry Tray**  
Tray conveniently fits into every safe. Burgundy felt lined. Dimensions: 10 3/8" x 9 3/8" x 2"



**Desiccant**  
Prevents rust and moisture damage. Recommended for safes without electrical access.



**Pistol Rack**

This four-gun rack is ideal for organizing pistols inside your safe.



**"AR" Gun Racks**

New – "AR" gun racks are fully adjustable and custom fit in the side shelf area of each "BF" series gun safe. Each rack is designed with enough clearance to accommodate extra large front sights or optics. All racks feature rich pin-dot fabric.



**Fluorescent Light Kits**

One fluorescent light mounted vertically in back of safe for all lower compartments and one front top light for upper area.

Includes connector cables, door switch and power strip.

**"Premium" Upgrade Package for BF® and HS Safes**  
When you choose to upgrade your American Security HS, BF® or SF Series with a "Premium Package", we'll add on some of our most popular options, shown above with the "Premium Package" symbol.

# Electronic Locks and Other Options



## 4 Drawer Cabinet



## 2 Drawer Cabinet



These elegant, well-appointed 2-drawer and 4-drawer interior chests are the most sophisticated way to store and display your jewelry collection and letter files. These stunning chests are finely crafted in solid-wood maple drawer fronts and maple veneer and finished in a rich honey maple stain. NEW recessed door pulls give these cabinets a more streamlined appearance and makes for an easier fit into a variety of AMSEC safes. All drawers are elegantly lined in a silky, dark red felt and include a variety of Stor-It Jewelry Organizer Inserts.

### Two Drawer Cabinet

Top drawer includes a Three Compartment Ring Organizer and a Seven Compartment Jewelry Organizer. Bottom drawer can be used for bulky items or converts to a file drawer.

### Four Drawer Cabinet

Top drawer includes a Three Compartment Ring Organizer and a Seven Compartment Jewelry Organizer. Drawer Two Includes a Three Compartment Necklace Organizer. Drawer Three Includes a Four Compartment Watch Organizer. Drawer Four is left open for easy access of large, bulky items, or stack additional Stor-It Jewelry Organizer Inserts.

### Storage Cabinet Specifications

Model	Outside Dimensions (HxWxD)	Weight
<b>2-Drawer</b>	16 <sup>5</sup> / <sub>8</sub> x 16 x 14 <sup>3</sup> / <sub>8</sub>	28
<b>4-Drawer</b>	16 <sup>5</sup> / <sub>8</sub> x 16 x 14 <sup>3</sup> / <sub>8</sub>	29

Additional Stor-it Jewelry Organizers can be purchased separately and stacked together to accommodate all your storage needs. Each insert can be removed for easy viewing, selecting and protection of your jewelry.

## Stor-it-Shelves

(BF Gun Safes Only  
2 can be added to BF7250)

Built with 16 ga. steel.

Two hand gun storage slots.

Raised edge on all shelves keeps items in place.

Convenient storage space.

**27½" H x 14" W x 2" D**



### Necklace Hanger

Attaches to back cover of safe door and includes 13 pegs to hang necklaces tangle-free.

NOTE: Always check inside clearance before closing door.



### Seven Compartment Jewelry Organizer

With (3) long spaces to hold necklaces of any size tangle-free and four (4) small spaces to place pendants and ear rings.



### Four Compartment Watch Organizer

With four soft pillows that hold your most precious watches and bracelets.



### Three Compartment Ring Organizer

Features a Ring-holder and two (2) large open spaces for bracelets, ear rings.



### Three Compartment Necklace Organizer

With three (3) extra long spaces to hold necklaces of any size tangle-free.

# Stor-it Gun Safe Storage Solutions





**PDO for BF7250**



**PDO for BF7240**



**PDO for BF6636**



**PDO for SF6036, TF6036**



**PDO for BF6030,  
BF6032, SF6030, SF6032,  
TF6030, TF6032**

#### **Stor-it** pdo **Premium Door Organizer:**

AMSEC's new Premium Door Organizer (PDO) maximizes storage space and offers quick access to commonly used items. All PDO's include:

- Various see-through pouches and zippered pockets to store valuables.
- Two rows of holders for storage of choke tubes, small flashlights and ammo.
- Two full-width pistol storage systems to accommodate multiple handguns. Comes with four holsters. Additional holsters can be purchased separately.
- A long gun storage system that accommodates two guns. Includes the AMSEC exclusive "no hassle" quick release band.
- Models PD07250 and PD07240 offer a zippered pocket large enough to store letter size folders.

The AMSEC Stor-it PDO can be factory installed on all BF® series gun safes and select SF and TF series gun safes.

**NOTE:** Always check inside clearance before closing door.

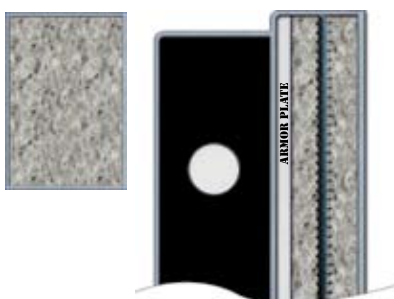
## Premium Door Organizers

# Features at a Glance

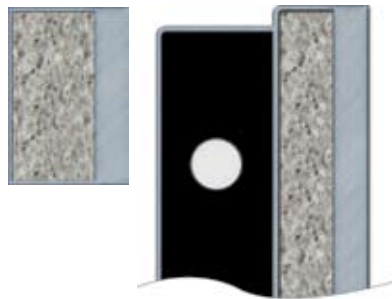
Model	Exterior Dimensions H x W x D	Gun Capacity	Weight	Bolts	Bolt Diameter	Warranty	
<b>HS SERIES</b>							
<b>RF6528</b>	72" x 35" x 29½"	12-18-30	3,455	10	1½"	Lifetime	
<b>HS7943</b>	79" x 43" x 29½"	12-23-35	6,840	10	1½"	Lifetime	
<b>HS6743</b>	67" x 43" x 29½"	12-23-35	4,824	10	1½"	Lifetime	
<b>BF SERIES</b>							
<b>BF7250</b>	71¼" x 50" x 28"	12-23-24-35-47 w/PDO: 12-22-24-33-45 +2	1,682	11	1½"	Lifetime	
<b>BF7240</b>	71¼" x 40" x 26"	12-18-24-30-42 w/PDO: 12-14-24-26-38 +2	1,490	11	1½"	Lifetime	
<b>BF6636</b>	65¼" x 36" x 26"	12-23-35 w/PDO: 12-19-31 +2	1,246	11	1½"	Lifetime	
<b>BF6030</b>	59¼" x 30" x 26"	12-18-30 w/PDO: 11-14-25 +2	976	11	1½"	Lifetime	
<b>BF6032</b>	59¼" x 30" x 21"	8-14-22 w/PDO: 7-11-18 +2	862	11	1½"	Lifetime	
<b>SF SERIES</b>							
<b>SF6036</b>	59" x 36" x 26"	17-17-34 w/PDO: 17-17-34 +2	718	8	1¼"	Lifetime	
<b>SF6030</b>	59" x 30" x 26"	14-14-28 w/PDO: 14-14-28 +2	646	8	1¼"	Lifetime	
<b>SF6032</b>	59" x 30" x 21"	9-9-18 w/PDO: 9-9-18 +2	576	8	1¼"	Lifetime	
<b>SF5924</b>	59" x 24" x 18"	8-8-16	462	8	1¼"	Lifetime	
<b>TF SERIES</b>							
<b>TF6036</b>	59" x 36" x 26"	19-19-38 w/PDO: 19-19-38 +2	618	8	1¼"	Lifetime	
<b>TF6030</b>	59" x 30" x 26"	15-15-30 w/PDO: 15-15-30 +2	528	8	1¼"	Lifetime	
<b>TF6032</b>	59" x 30" x 21"	11-11-22 w/PDO: 11-11-22 +2	472	8	1¼"	Lifetime	
<b>TF5924</b>	59" x 24" x 18"	8-8-16	388	8	1¼"	Lifetime	
<b>TF5517</b>	55¼" x 17¾" x 16"	11	286	8	1"	1 Year Parts & Labor	
<b>EXECUTIVE SERIES</b>							
<b>CSC4520</b>	45" x 20" x 21.2"	6	768	7	1½"	1 Year Parts & Labor	

NOTE: Dimensions listed are exterior dimensions. Add 2" to overall depth for lock and handle on all safes.

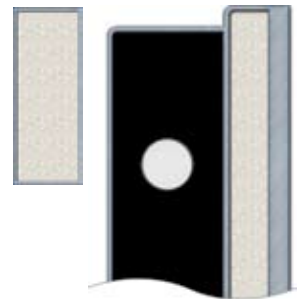
**RF6528 Body / Door**



**HS Series Body / Door**



**BF Series Body / Door**

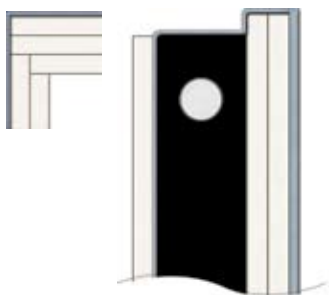




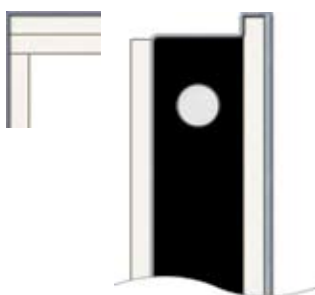
# Features at a Glance

	U.L. Listing	Thickness		Fire Rating	Dial	Handle	Standard Interior
		Door <i>Overall/Steel Plate</i>	Body				
	TL30	5¾"	3½"	2 Hr / 1850° F	Spy-Proof, Key-Lock	5-spoke	Tan Pin-Dot
	TL15	5¾" / 1"	3½"	2 Hr / 1850° F	Spy-Proof, Key-Lock	5-spoke	Tan Pin-Dot
	TL15	5¾" / 1"	3½"	2 Hr / 1850° F	Spy-Proof, Key-Lock	5-spoke	Tan Pin-Dot
	RSC	4 <sup>5</sup> / <sub>16</sub> " / ¾"	2"	90 min / 1275° F	Spy-Proof, Key-Lock	5-spoke	Tan Pin-Dot
	RSC	4¾" / ½"	2"	90 min / 1275° F	Spy-Proof, Key-Lock	5-spoke	Tan Pin-Dot
	RSC	4¾" / ½"	2"	90 min / 1275° F	Spy-Proof, Key-Lock	5-spoke	Tan Pin-Dot
	RSC	4¾" / ½"	2"	90 min / 1275° F	Spy-Proof, Key-Lock	5-spoke	Tan Pin-Dot
	RSC	4¾" / ½"	2"	90 min / 1275° F	Spy-Proof, Key-Lock	5-spoke	Tan Pin-Dot
	RSC	4¼" / ¼"	12 ga.	60 min / 1200° F	Spy-Proof, Key-Lock	3-spoke	Tan Velour
	RSC	4¼" / ¼"	12 ga.	60 min / 1200° F	Spy-Proof, Key-Lock	3-spoke	Tan Velour
	RSC	4¼" / ¼"	12 ga.	60 min / 1200° F	Spy-Proof, Key-Lock	3-spoke	Tan Velour
	RSC	4¼" / ¼"	12 ga.	60 min / 1200° F	Spy-Proof, Key-Lock	3-spoke	Tan Velour
	B-Rate	3 <sup>5</sup> / <sub>8</sub> " / ¾"	12 ga.	30 min / 1200° F	Spy-Proof	3-spoke	Mocha Fabric
	B-Rate	3 <sup>5</sup> / <sub>8</sub> " / ¾"	12 ga.	30 min / 1200° F	Spy-Proof	3-spoke	Mocha Fabric
	B-Rate	3 <sup>5</sup> / <sub>8</sub> " / ¾"	12 ga.	30 min / 1200° F	Spy-Proof	3-spoke	Mocha Fabric
	B-Rate	3 <sup>5</sup> / <sub>8</sub> " / ¾"	14 ga.	30 min / 1200° F	Spy-Proof	3-spoke	Mocha Fabric
	B-Rate	3¼" / ¾"	14 ga.	30 min / 1200° F	Spy-Proof	"L" Handle	Mocha Fabric
	B-Rate	4 <sup>5</sup> / <sub>8</sub> "	2½"	2hr / 1700° F	Spy-Proof, Key-Lock	3-spoke	Tan Pin-Dot

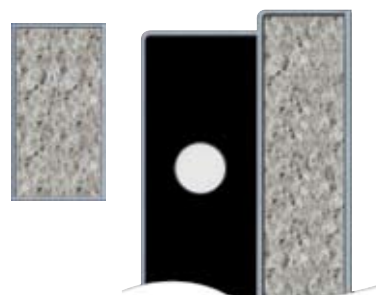
**SF Series Body / Door**



**TF Series Body / Door**



**CSC Series Body / Door**



**THE HIGH SECURITY "HS" SERIES**



**THE ONE-OF-A-KIND "BF" SERIES**



**THE SIXTY-MINUTE FIRE RATED "SF" SERIES**



**THE THIRTY-MINUTE FIRE RATED "TF" SERIES**

